



**MERITOR®**

# MERITOR BLACK BRAKE SHOE & HARDWARE KITS TRUCK / TRAILER & BUS



Comprehensive Design and Solid  
Construction Ensures Resilience and  
Long Life

[meritorpartsonline.com.au](http://meritorpartsonline.com.au)

**RUN  
WITH THE BULL**



**MERITOR**



**MERITOR**

Meritor is the world leader in braking technology. Our parts are made to Meritor Standards and not reverse engineered.

Our comprehensive range of brake shoe kits ensure we have an application to suit your truck, trailer and fleet.

The Euclid brand has long been a member of our brake shoe kit family and as part of our exciting rebrand, we want our valued customers to know that while we have changed the box, the same great product remains.

Want the best brake shoe kits?

**Run With The Best. Run With The Bull.**





**RUN**  
WITH THE **BULL**



**MERITOR**

# The Meritor Advantage

Meritor is the largest independent axle and braking system manufacturer in the world. Our brake shoe kits are proudly assembled and riveted in Australia.

## Brake Shoe Quality

- Made from high-grade carbon steel
- Contains the most appropriate percentage of carbon to give the exact balance between rigidity and flexibility
- Welding at 5 spots or more for a stronger shoe
- Hardened journal ends reduce wear rates
- Strict quality control through stringent production part approval process (PPAP)

## Brake Lining

- The MG1A and MG2A brake linings outperform FMVSS 121 standards by 10%
- Our linings are **certified 100% asbestos free** and the best in its class for aftermarket
- Offer better retardation ratio compared to competitors
- Superior fade and recovery characteristics

## Rivets

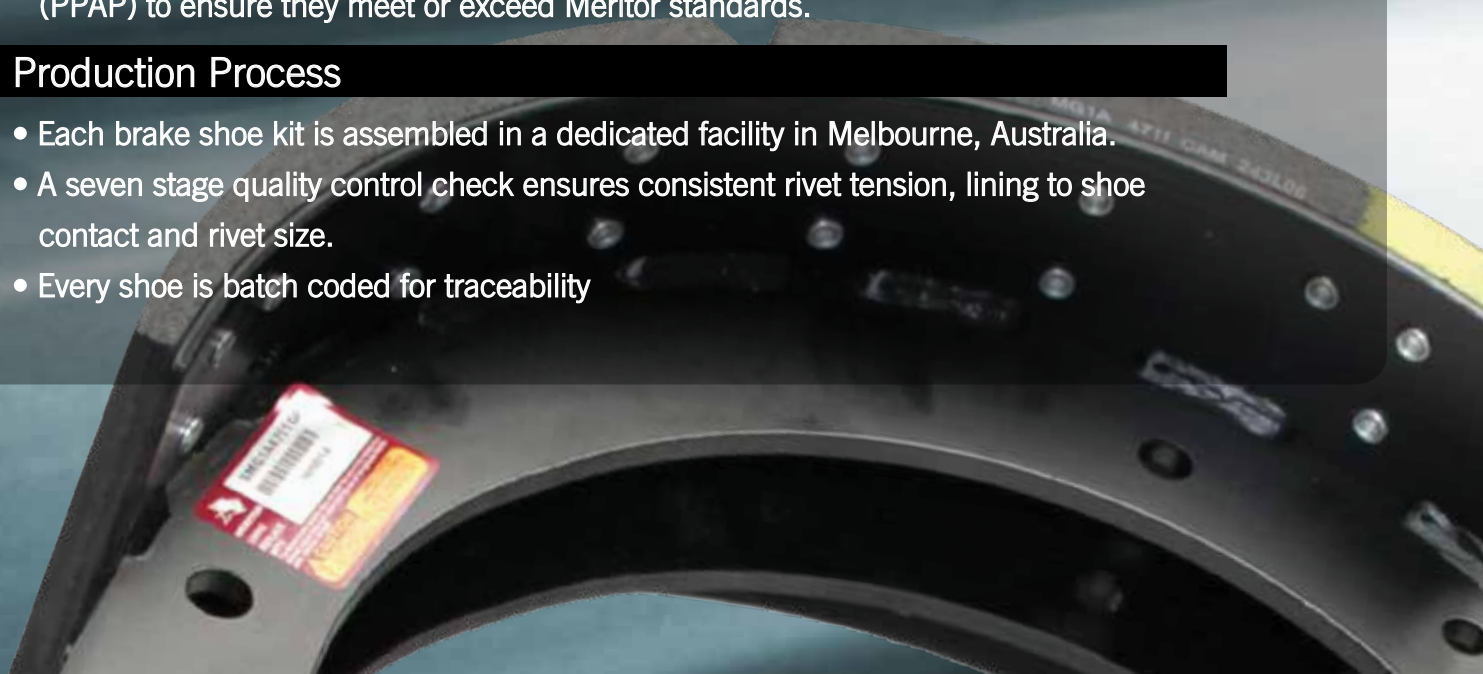
- Meritor uses steel rivets with oil coating which allows taut crimping and reduces the chance of cracking.

## Hardware Kits

- All hardware kits have passed through a stringent production part approval process (PPAP) to ensure they meet or exceed Meritor standards.

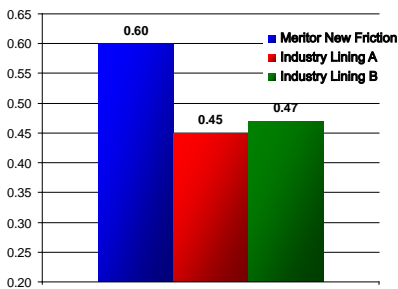
## Production Process

- Each brake shoe kit is assembled in a dedicated facility in Melbourne, Australia.
- A seven stage quality control check ensures consistent rivet tension, lining to shoe contact and rivet size.
- Every shoe is batch coded for traceability



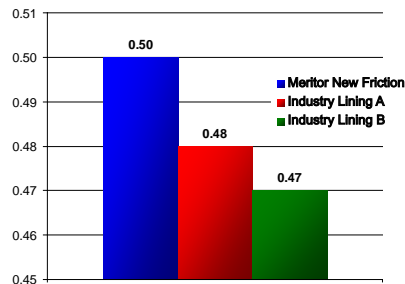
As an innovation leader in the commercial vehicle industry, Meritor is committed to bringing you the best in braking solutions. Our **Meritor Black Brake Shoe Kits** provide premium performance and reliability, backed by the best support in the industry.

## MG1A Retardation Force



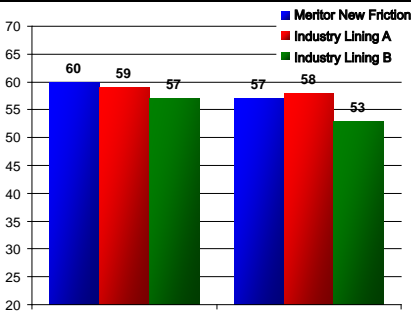
MG1A provides substantial improvement over other linings

## MG2A Retardation Force



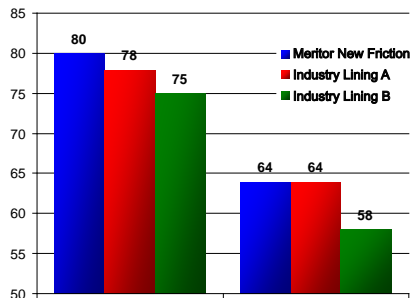
MG2A displays better retardation when compared to other linings

## MG1A Recovery



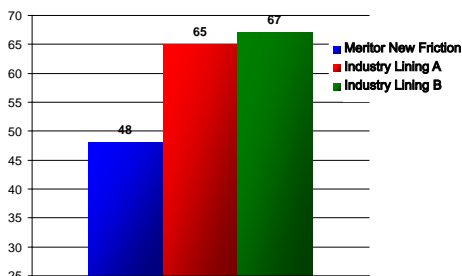
Recovery rates are comparable to industry linings

## MG2A Recovery



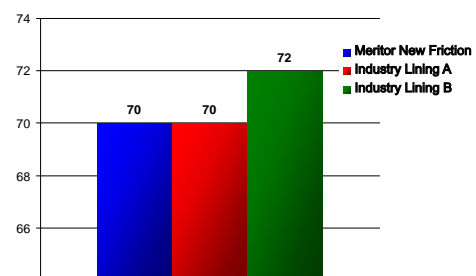
MG2A exhibits an improvement in recovery

## MG1A Brake Fade



Better fade characteristics

## MG2A Brake Fade



Fade characteristics are maintained

When the time comes to replace your brake shoes, look no further than Meritor.

# Meritor Hardware Kits

Brakes are a system and all components must operate in sync. Meritor hardware kits provide just that. With a comprehensive design and construction, our kits ensure long life and safety.

- Delivers optimal stopping performance
- Provides extended brake life reducing downtime and maintenance costs
- All parts approved to Meritor product specifications and engineered to handle brake forces while delivering advanced performance
- Economically priced to meet your business needs
- Built in technology leadership you require from a leader in brake manufacturing



## Choosing the right lining for your brakes.



Max. Mass Limit by Axle Group

6t

17t

22.5t

Max. Mass Limit by Axle

6t

8.5t

7.5t

### Brake Lining Ratings

GAWR (lbs.)	GAWR (t)
20,000lbs	9.1t
23,000lbs	10.5t

All brake linings offered by Meritor exceed maximum road legal load limits in Australia

Meritor approved friction materials provide the highest level of stopping performance brake shoe and hardware kits quality approved to meet or exceed OE standards.

WHO'S STOPPING YOU?

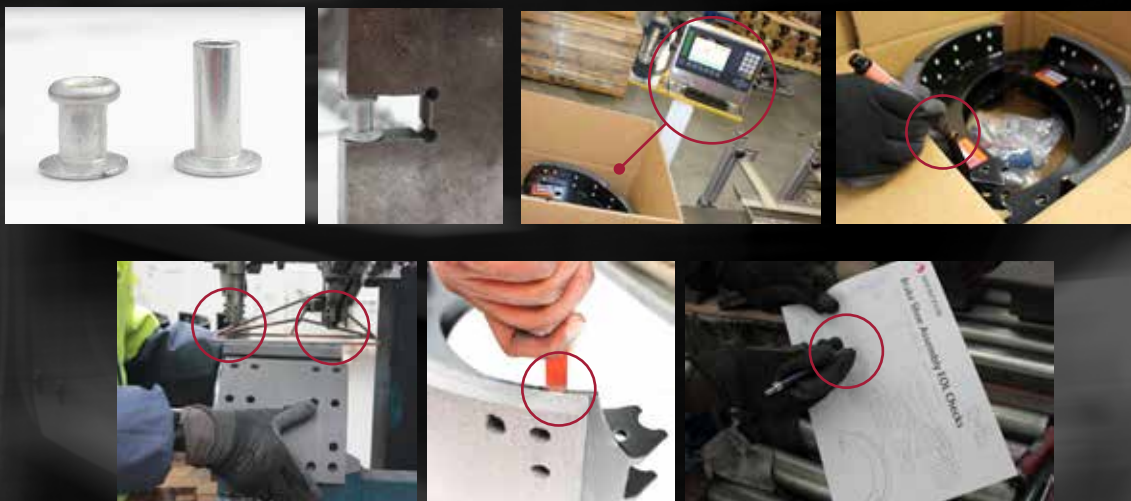
# Brake Shoe Kit Production Process

Meritor's production process is certified to PPAP Level 3 (Production Part Approval Process) ensuring superior integrity of every component; resulting in the best aftermarket brake shoe kit in the market.



## How We Achieve This?

Every 30 minutes a full 7 stage quality control check is performed to ensure the brake shoe kits meet the Meritor standards. In addition, our riveting machines are identical to those used by Meritor globally to produce millions of brakes shoe kits and are maintained on a regular basis by unbolting, cleaning and adjusting guides to ensure optimum performance and consistency throughout the riveting process.



**RUN**  
WITH THE **BULL**

**MERITOR**

# Meritor Black Brake Shoe Kits - Quick Reference Brake Guide

FMSI + SHOE TYPE	APPLICATION	SIZE	STANDARD GRADE	PREMIUM GRADE
1308, Q	MERITOR STEER "Q"	15" X 4" Q	MSKMG1A1308Q	MSKMG2A1308Q
1308, T	MERITOR STEER "T" BRAKE	15" X 4" T	MSKMG1A1308T	MSKMG2A1308T
4311, E	EATON DRIVE	16.5" X 7"	MSKMG1A4311E	MSKMG2A4311E
4514, Q	MERITOR STEER "Q"	16.5" X 6" Q	MSKMG1A4514Q	MSKMG2A4514Q
4515, F(Q)	FRUEHAUF/ SAF/ TMC	16.5" X 7" Q	MSKMG1A4515F3	MSKMG2A4515F3
4515, FPW	FRUEHAUF SEVERE SERVICE	16.5"X7"	MSKMG1A4515FPW	MSKMG2A4515FPW
4515, F(P)	FRUEHAUF/ SAF/ TMC	16.5" X 7" P	MSKMG1A4515F	MSKMG2A4515F
4515, P	MERITOR DRIVE "P"	16.5" X 7" P	MSKMG1A4515PHD	MSKMG2A4515PHD
4515, PSS	MERITOR DRIVE "P" SEVERE SERVICE - SMOOTH	16.5" X 7" P	MSKMG1A4515PSS	MSKMG2A4515PSS
4515, PSSK	MERITOR DRIVE "P" SEVERE SERVICE - KNURLED	16.5" X 7" P	MSKMG1A4515PSSK	MSKMG2A4515PSSK
4515, Q	MERITOR DRIVE "Q"	16.5" X 7" Q	MSKMG1A4515Q	MSKMG2A4515Q
4524P	MERITOR STEER "P"	16.5"X5"		MSKMG2A4524P
4524, Q	MERITOR STEER "Q"	16.5" X 5" Q	MSKMG1A4524Q	MSKMG2A4524Q
4692	DANA	12 1/4" X 7.5"	MSKMG1A4692	MSKMG2A4692
4702, QP	MERITOR STEER "Q PLUS"	15" X 4" Q PLUS	MSKMG1A4702QP	MSKMG2A4702QP
4705, QP	MERITOR STEER "Q PLUS"	15" X 7" Q PLUS	MSKMG1A4705QP	MSKMG2A4705QP
4707, QP	MERITOR DRIVE "Q PLUS"	16.5" X 7" Q PLUS	MSKMG1A4707QP	MSKMG2A4707QP
4709, ESI	EATON ES1 DRIVE	16.5" X 7"	MSKMG1A4709E1	MSKMG2A4709E1
4709, ESII	EATON ESII DRIVE	16.5" X 7"	MSKMG1A4709E2	MSKMG2A4709E2
4710, QP	MERITOR STEER /TRAILER "Q PLUS"	15" X 8 5/8" Q PLUS	MSKMG1A4710QP	MSKMG2A4710QP
4711, QP	HENDRICKSON INTRAAX	16.5" X 8 5/8" Q PLUS	MSKMG1A4711QP	MSKMG2A4711QP
4715, QP	MERITOR STEER "Q PLUS"	16.5" X 6" Q PLUS	MSKMG1A4715QP	MSKMG2A4715QP
4719, ESII	EATON STEER BRAKE ESII	16.5" X 5"	MSKMG1A4719E	MSKMG2A4719E
4719, ESII	EATON DRIVE BRAKE ESII	16.5" X 5"	MSKMG1A4719R	MSKMG2A4719R
4720, QP	MERITOR STEER "Q PLUS"	16.5" X 5" Q PLUS	MSKMG1A4720QP	MSKMG2A4720QP
4725	SPICER STEER BRAKE	16.5" X 6"	MSKMG1A4725R	MSKMG2A4725R
BC/36/1, B95	BPW BRAKE 95 BC/36/1	420MM X 180MM	MSKMG1ABC36/95	MSKMG2ABC36/95
BC/36/1, NG	BPW NEW GEN BC36/1	420MM X 180MM	MSKMG1ABC36/NG	MSKMG2ABC36/NG
BC/37/1, B95	BPW BRAKE 95 BC/37/1	420MM X 200MM	MSKMG1ABC37	MSKMG2ABC37



Euclid Brake Shoe Kits are now boxed as Meritor Black.

Same great product - new box.  
Just look for the black bull.